

BIOARCTIC AB (PUBL)
NASDAQ STOCKHOLM: BIOA B

Full Year Report January-December 2019

Stockholm, February 6, 2020

Gunilla Osswald, PhD, CEO

Jan Mattsson, CFO



Disclaimer

- This presentation has been prepared and produced by BioArctic AB (publ) (“BioArctic”) solely for the benefit of investment analysis of BioArctic and may not be used for any other purpose. Unless otherwise stated, BioArctic is the source for all data contained in this presentation. Such data is provided as at the date of this presentation and is subject to change without notice.
- This presentation includes forward-looking statements. These forward-looking statements involve known and unknown risks, uncertainties and other factors, which may cause BioArctic’s actual results, performance, achievements or industry results to be materially different from those expressed or implied by these forward-looking statements. Forward-looking statements speak only as of the date of this presentation and BioArctic expressly disclaims any obligation or undertaking to release any update of, or revisions to, any forward-looking statement in this presentation, as a result of any change in BioArctic’s expectations or any change in events, conditions or circumstances on which these forward-looking statements are based.
- This presentation does not constitute or form part of, and should not be construed as, an offer or invitation for the sale of or the subscription of, or a solicitation of any offer to buy or subscribe for, any securities, nor shall it or any part of it or the fact of its distribution form, or be relied on in connection with, any offer, contract, commitment or investment decision relating thereto, nor does it constitute a recommendation regarding the securities of BioArctic.
- The information in this presentation has not been independently verified.
- No regulatory body in Sweden or elsewhere has examined, approved or registered this presentation.

BioArctic – a unique Swedish biopharma company

Improving life for patients with central nervous system disorders



High unmet need for disease-modifying treatments for Alzheimer's and Parkinson's diseases creates **large commercial opportunity**



World-class research and development driven organization with basis in founder's breakthrough discoveries and fruitful collaborations with leading **academic researchers** and **pharma companies** generating and developing **innovative projects**



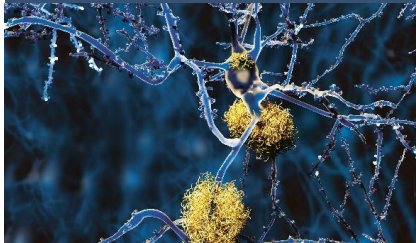
Attractive and well-balanced project portfolio with projects from discovery through Phase 3 and combination of both proprietary projects with substantial marketing and out-licensing potential and partnered projects generating income



Well-financed with BSEK >1 (MUSD >100) in cash, **net profitable** during the last seven years and **valuable collaboration agreements** totaling BSEK 9.6 (BUSD ~1) plus royalties

Enhanced project portfolio from a successful 2019

Alzheimer's disease



BAN2401

- 3 clinical trials underway or in planning
- Including Phase 3 confirmatory study ("Clarity AD") underway
- Phase 3 start milestone MEUR 15 received



Discovery stage programs

- Expanded to 4 fully-owned disease modifying programs

Parkinson's disease



ABBV-0805

- IND produced by BioArctic approved by FDA
- Phase 1 study ongoing by partner

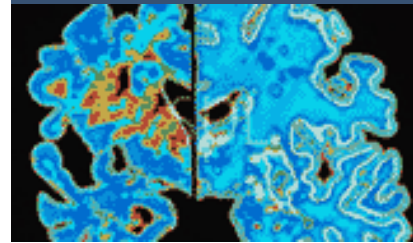
abbvie

Discovery stage projects

- Progressed according to plan in research collaboration with

abbvie

Other CNS disorders



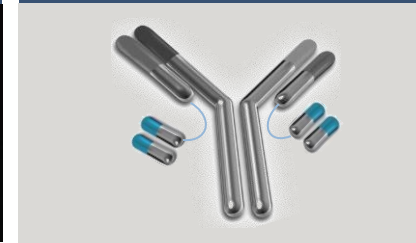
SC0806 - spinal cord injury

- Results from interim analysis did not show convincing effects
- Responsible project closure

Neurodegeneration research

- Working on new indications and new targets
- New research program - potential in various neurodegenerative disorders

Blood-brain barrier technology



Blood-brain barrier technology platform

- Increased activities and added expertise

Diagnostic tools



Diagnostic tools

- Continue development of imaging and biochemical biomarkers

Attractive and well-balanced project portfolio combines fully-financed partner projects and cutting-edge proprietary projects

	Project	Partner	Discovery	Preclinical	Phase 1	Phase 2	Phase 3
ALZHEIMER'S DISEASE	BAN2401	Eisai, Biogen ¹	[Progress bar spanning Discovery, Preclinical, Phase 1, and Phase 2]				
	BAN2401 back-up	Eisai	[Progress bar spanning Discovery and Preclinical]				
	AD1801		[Progress bar in Discovery]				
	AD1502		[Progress bar in Discovery]				
	AD1503		[Progress bar in Discovery]				
	AD2603		[Progress bar in Discovery]				
PARKINSON'S DISEASE	ABBV-0805 ²	AbbVie	[Progress bar spanning Discovery, Preclinical, and Phase 1]				
	PD1601	AbbVie	[Progress bar in Discovery]				
	PD1602	AbbVie	[Progress bar in Discovery]				
OTHER CNS DISORDERS	BAN2401 Down's syndrome ³ Traumatic brain injury		[Progress bar spanning Discovery, Preclinical, and Phase 1]				
	ND3014		[Progress bar in Discovery]				
BLOOD-BRAIN BARRIER TECHNOLOGY	BBB technology platform		[Progress bar in Discovery]				
DIAGNOSTIC TOOLS	Imaging and biochemical biomarkers – Alzheimer's disease		[Progress bar in Discovery]				
	Imaging and biochemical biomarkers – Parkinson's disease	AbbVie	[Progress bar in Discovery]				

as of December 31, 2019

- 1) Partnered with Eisai for BAN2401 for treatment of Alzheimer's disease. Eisai entered partnership with Biogen regarding BAN2401 in 2014
- 2) AbbVie in-licensed BAN0805 in late 2018 and develops the antibody with the designation ABBV-0805
- 3) Dementia and cognitive impairment associated with Down's syndrome

Long-standing and extensive partnerships

Alzheimer's disease

Partner track record

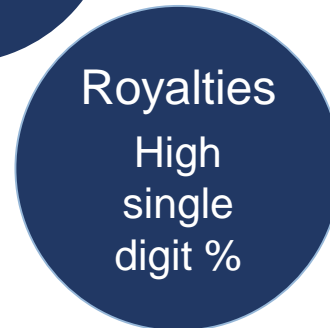
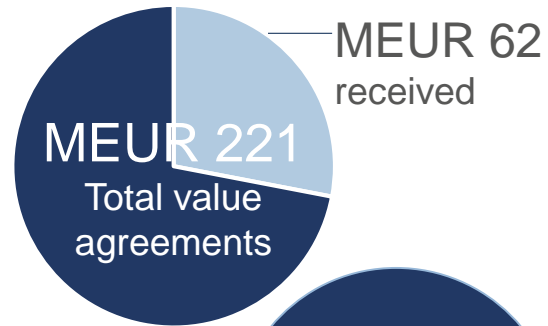


Discovered and developed world's best-selling medicine for symptoms in Alzheimer's



Industry-leading pipeline in dementia area

Collaboration and license



- BioArctic retains rights to BAN2401 in other indications and option to market in the Nordics

Parkinson's disease

Partner track record



World's all-time best-selling medicine (BUSD 20)

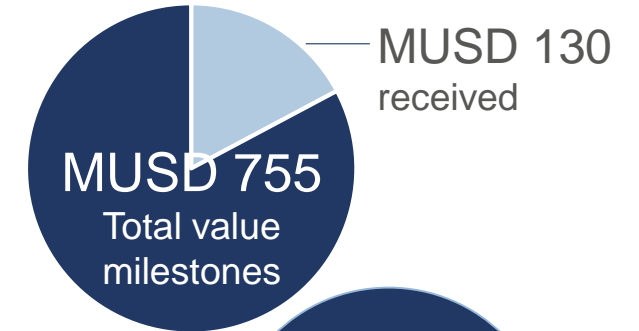


10 different indications in immunology

Approved product for symptoms associated with Parkinson's disease



Collaboration and license

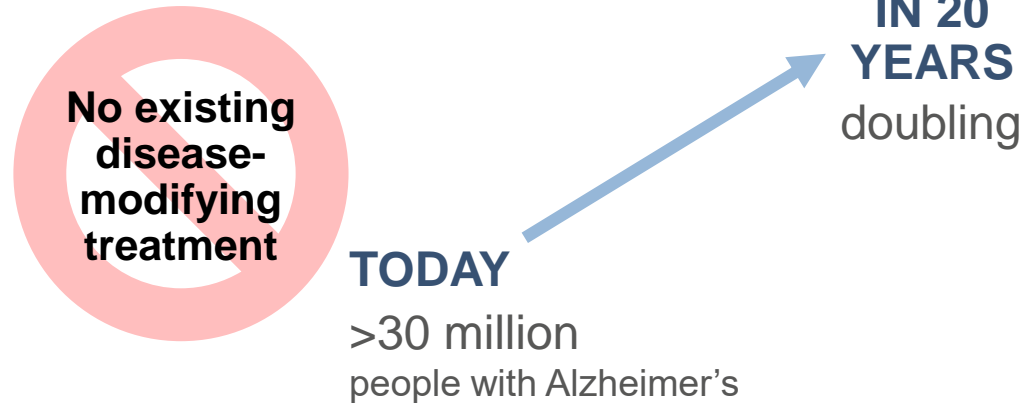


- AbbVie global rights to alpha-synuclein portfolio for all indications

Sources: Eisai, AbbVie and BioArctic corporate information

BAN2401: potential disease modifying antibody for Alzheimer's disease with positive Phase 2b results now in Phase 3

High unmet medical need



BAN2401 unique profile

Unique and targeted binding profile

- Highly selective for toxic forms of misfolded Abeta (oligomers/protofibrils)

Unique clinical fingerprint

- Rapid onset of clinical effect
- Consistent effects
- No titration required due to low frequency of ARIA-E

BAN2401 has positive Phase 2b results

- **Large trial:** 856 early Alzheimer's patients
- **Consistent effects** on clinical outcomes, imaging and neurodegenerative biomarkers
- **Effect increase over time**
- **Good safety profile**

Broad clinical program

- **Confirmatory Phase 3 study** ("Clarity AD") ongoing
 - Primary endpoint final readout expected 2022
- Phase 2b open label extension study ongoing
- Phase 3 prevention program ("AHEAD 3-45" comprised of 2 groups "A3" and "A45") in even earlier stages of AD
 - Preparing to start 2020

Broad BAN2401 clinical program

Clarity AD Phase 3 confirmatory study

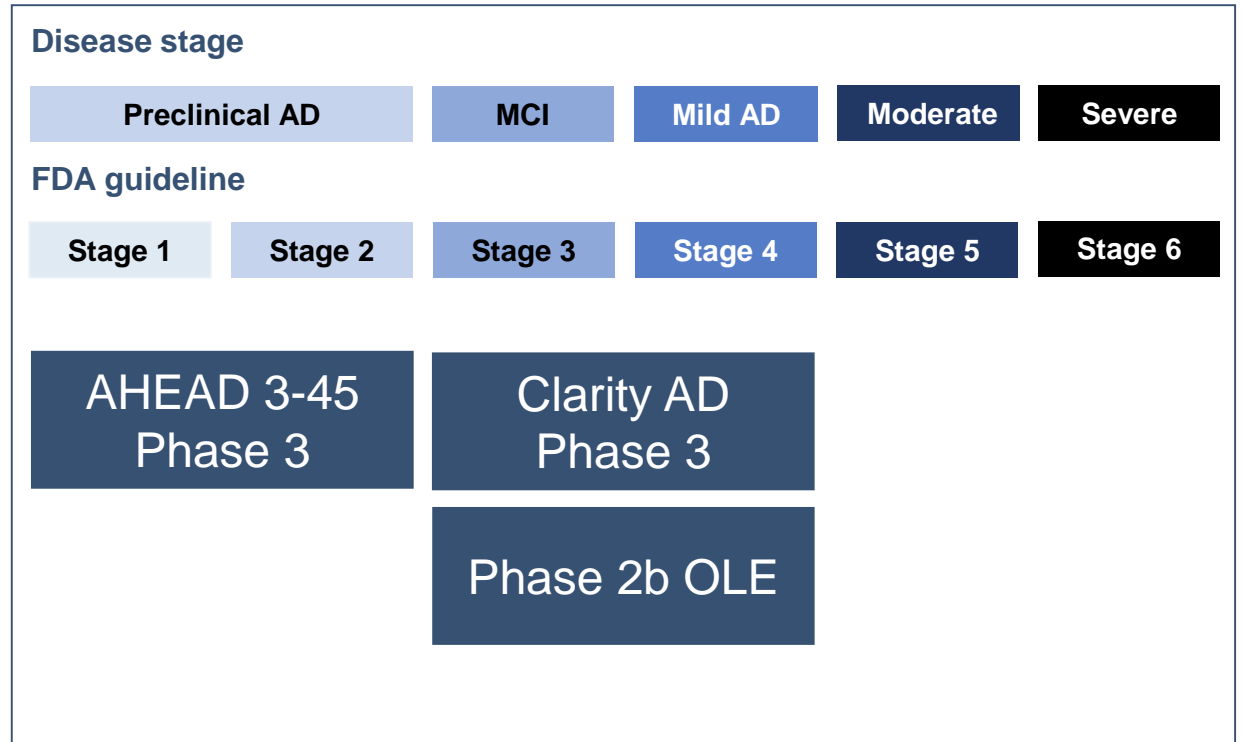
- Started May 2019, MEUR 15 milestone to BioArctic
- Study ongoing in patients with early AD
- Primary endpoint readout expected 2022


Phase 2b OLE open-label extension study

- Ongoing in early AD
- Baseline data presented at CTAD December 2019 showed maintenance of benefit after BAN2401 treatment conclusion

AHEAD 3-45 Phase 3 Program

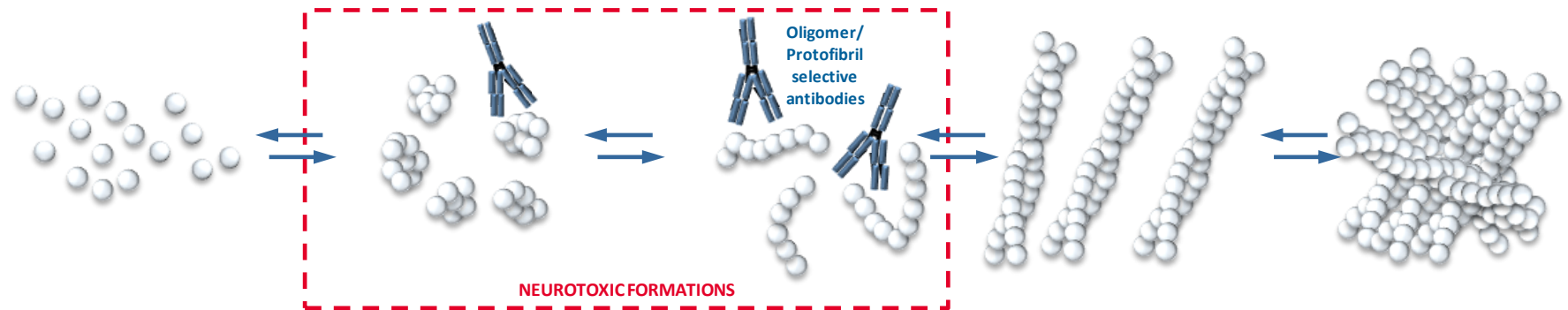
- Eisai and ACTC planning to start A3 and A45 prevention study in 2020
- A45: preclinical AD with little to no cognitive impairment and elevated levels of amyloid in the brain
- A3: early preclinical AD, cognitively normal with intermediate amyloid levels in the brain
- Biomarkers on amyloid, tau and neurodegeneration
- Clinical evaluation scale PACC5¹ for A45



Clinical program driven by: 

BAN2401 unique binding presented during 2019 with more to come

Alzheimer's disease: misfolded amyloid beta results in amyloid plaques



BAN2401 highly selective binding profile presented at AAIC® and CTAD conferences in 2019

- Research collaboration signed with Eisai December 2019 (total value MEUR 3.25)
 - Aim to further characterize BAN2401
- Additional presentation upcoming at AAT-AD/PD in April 2020 in Vienna

ABBV-0805: potential disease modifying antibody for Parkinson's disease with strong preclinical results now in Phase 1

High unmet medical need

No existing disease-modifying treatment

- 2nd most common neurodegenerative disease
- 6.2 million people with Parkinson's¹
- Younger patient group, still at working age

1) Dorsey and Bloem, JAMA Neurology 2018;75:9-10

Unique profile

Unique and targeted binding profile

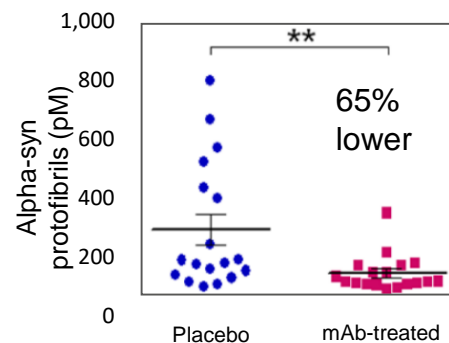
- Highly selective for toxic forms of misfolded alpha-synuclein (oligomers/protofibrils)

Built on genetic and pathology rationale

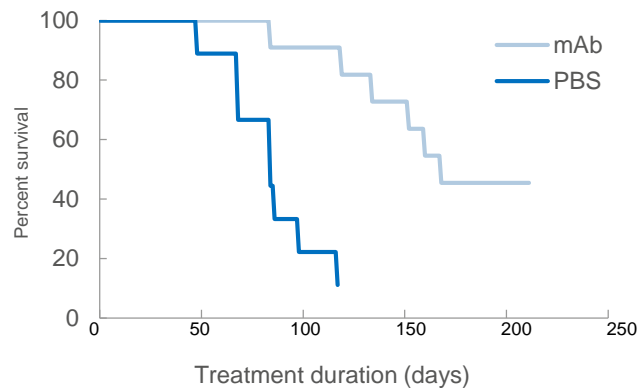
- Alpha-synuclein mutations lead to Parkinson's
- Alpha-synuclein oligomers/protofibrils are elevated in Parkinson's

Preclinical proof of concept

Reduction of neurotoxic alpha-synuclein oligomers/protofibrils



Delays disease progression and increases lifespan



ABBV-0805 in clinical development

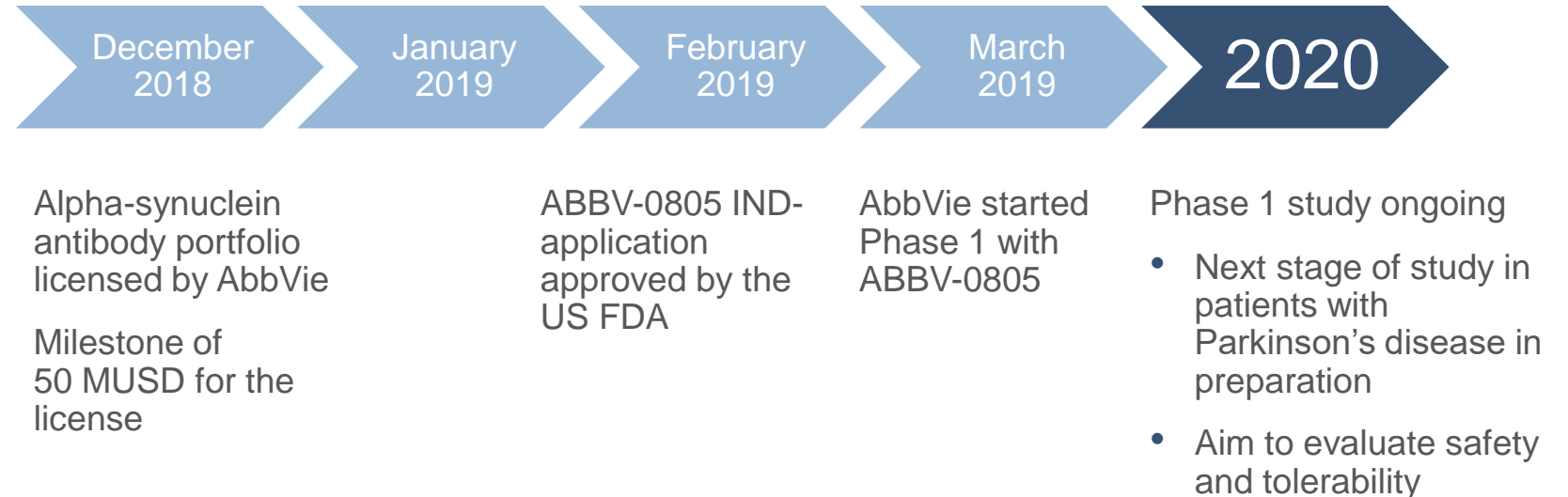
- Phase 1 with ABBV-0805 ongoing by AbbVie
- BioArctic will deliver follow-up antibodies in the continued collaboration with AbbVie

Continued progress in collaboration with AbbVie on alpha-synuclein

Collaboration highlights

- ABBV-0805 targeting disease modification in Parkinson's disease
- Potential to expand to earlier stage Parkinson's disease patients and other diseases where alpha-synuclein plays a role
- AbbVie is responsible for clinical development
- BioArctic will deliver follow-up antibodies in the continued collaboration with AbbVie

ABBV-0805 advancing in clinical trials



SC0806: Complete Spinal Cord Injury – project under closure

Phase 1/2 Clinical Study

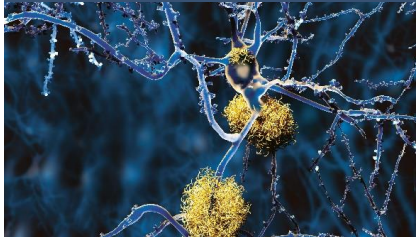
- Strong preclinical data motivated start of clinical study
- Safety was previously assessed in the first panel
- Interim analysis of safety and efficacy from clinical Phase 1/2 trial in patients with complete spinal cord injury reported November 2019
 - Primary endpoint not met
 - Lack of convincing efficacy on various secondary endpoints
 - Treatment and surgical method showed an acceptable safety profile
- Responsible study closure
 - No further patient inclusion
 - Patient who already had surgical procedure will complete 18 months training program

SC0806 Project

- Full project closure after last patient completes training
- Program primarily funded by EU Horizon 2020 research and innovative program grant of MEUR 6.4 (under Grant Agreement No. 643853)
- No impact on BioArctic's other projects

Early stage portfolio continues to develop well

Alzheimer's disease



Discovery stage programs

- Expanded to 4 disease modifying antibody projects in Alzheimer's disease
- Each project has a different mechanism from the others
- All fully-owned by BioArctic

Parkinson's disease

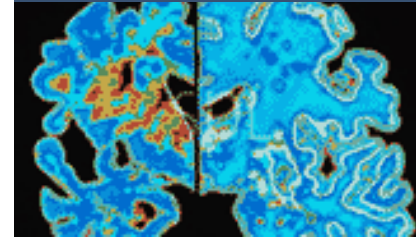


Discovery stage projects

- Preclinical stage alpha-synuclein projects in research collaboration with

abbvie

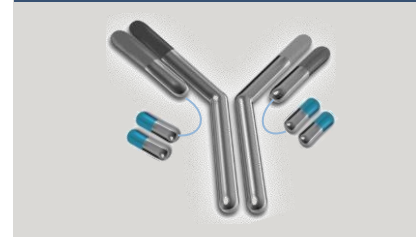
Other CNS disorders



Neurodegeneration research

- New research project with ND designation with potential in various CNS disorders

Blood-brain barrier technology



Blood-brain barrier technology platform

- Expanded and enhanced capabilities
- Vinnova grant of MSEK10 received together with Uppsala University
- Internationally renowned scientists recruited

Diagnostic tools



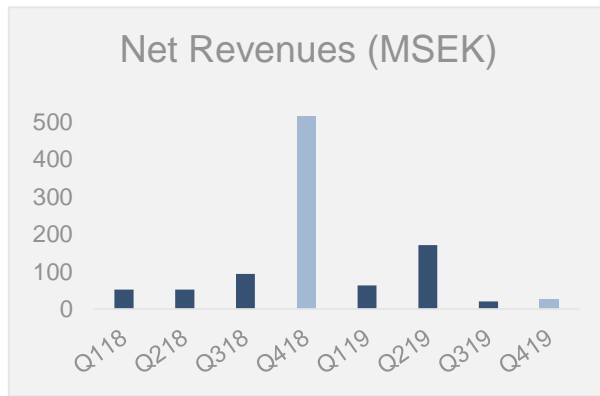
Diagnostic tools

- Continued development of imaging and biochemical biomarkers

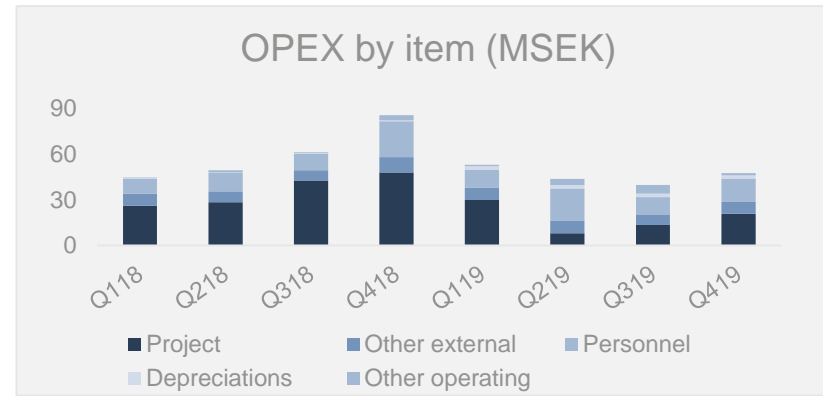


Finance Summary

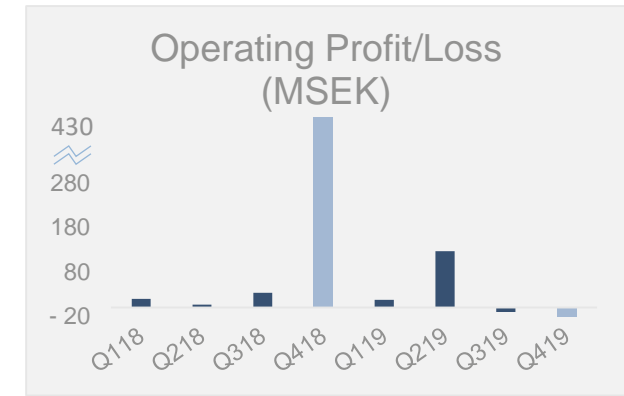
Net revenues and operating profit Q4 and full year 2019



- Net revenues were 26.4 MSEK (515.3) for the quarter
- The full year revenues were 281.8 MSEK (714.0)
- The change is primarily due to the one-time AbbVie milestone at end of 2018



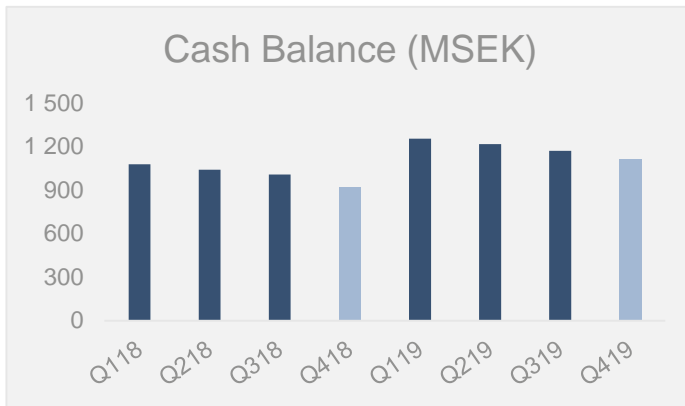
- Project expenses decreased to 21.0 MSEK (48.0) due to lower external expenses in the Parkinson's project versus previous year
- The personnel expenses decreased to 15.3 MSEK (23.6) since Q4 2018 included a variable remuneration based on the milestone payment from AbbVie
- Full year 2019 total operating expenses of 184 MSEK



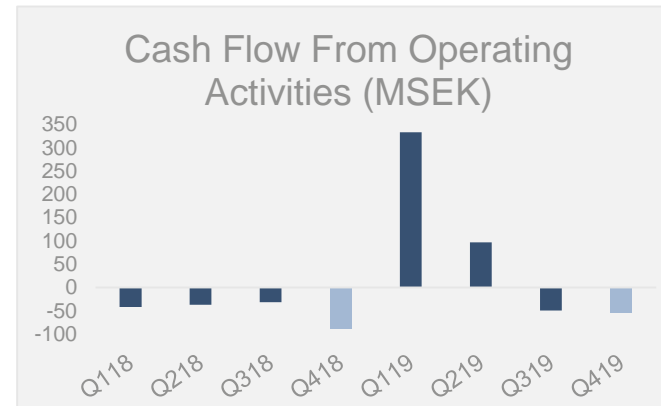
- Operating loss was -21.1 MSEK (430.3) for the quarter
- The decrease is attributable to the one-time AbbVie milestone received at end of 2018

Operating expenses are expected to be in the range of 180 - 230 MSEK for the financial year January - December 2020

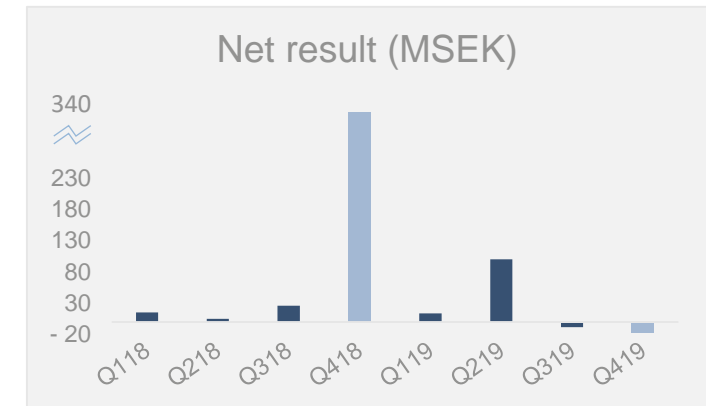
Cash related and net profit Q4 and full year 2019



- Cash balance amounted to 1,112.8 MSEK (917.3) at the end of the quarter



- Operating cash flow amounted to -54.2 MSEK (-89.3) during Q4



- Net result for the period were -17.1 MSEK (335.2) during Q4
- Net result for the full year amounted to 88.5 MSEK (381.6)

To sum up, BioArctic showed positive net result for the seventh consecutive year and continues to have a strong financial position

A person wearing a white lab coat and gloves is using a white multi-channel pipette to transfer liquid into a clear microplate. The pipette has 'Thermo' and 'EPPENDORF' branding. In the background, there is a laboratory bench with various glassware, including a large bottle with a black cap and a beaker. The scene is dimly lit, with a soft blue tint.

Upcoming news and closing remarks

Upcoming news flow

Alzheimer's disease



BAN2401 (Eisai)

- To present data at international congresses incl. AAT-AD/PD April 2020 in Vienna
- Phase 3 confirmatory study results 2022
- Phase 2b open label extension study results
- Phase 3 prevention study to start 2020

Discovery stage programs

- Advance into preclinical development

Parkinson's disease



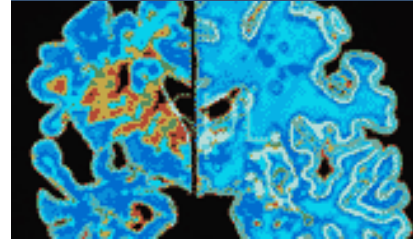
ABBV-0805 (AbbVie)

- Progress Phase 1 study into patients with Parkinson's disease
- Complete Phase 1 and start Phase 2

Discovery stage projects

- Development in AbbVie collaboration

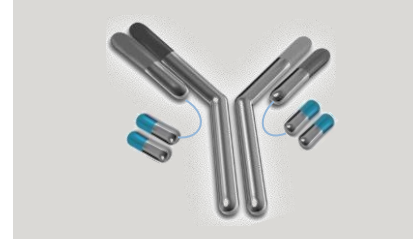
Other CNS disorders



Neurodegeneration research

- New project development
- New indications and new targets

Blood-brain barrier technology



Blood-brain barrier technology platform

- Expansion and continued development

Diagnostic tools



Diagnostic tools

- Continue development of imaging and biochemical biomarkers

GUNILLA OSSWALD, CEO



JAN MATTSSON, CFO



NEXT REPORT & IR CONTACT

- **Next Report:**
Annual Report 2019
published week of
March 30, 2020

Interim report Jan-Mar 2020
on April 22, 2020
- **Contact:**
+46 8 695 69 30
ir@bioarctic.se

To subscribe to financial reports/press releases and for more information, please visit www.bioarctic.com